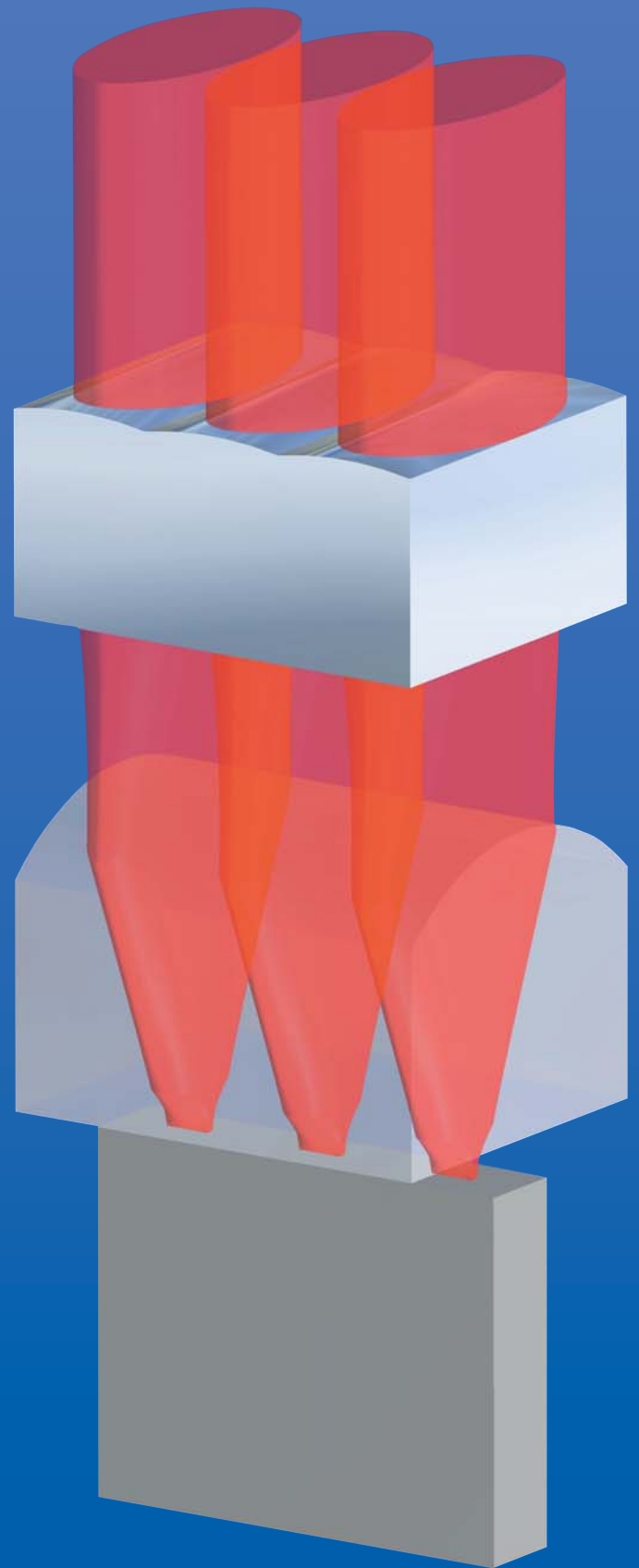


Laser Diode Optics

Slow Axis Collimator Lens Arrays





Laser Diodes

SAC

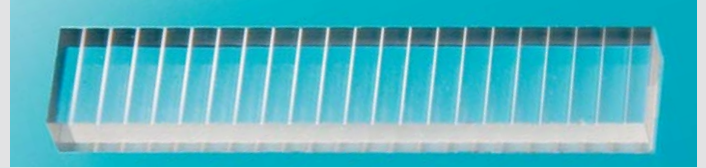
Slow Axis Collimator Lens Arrays

Benefits

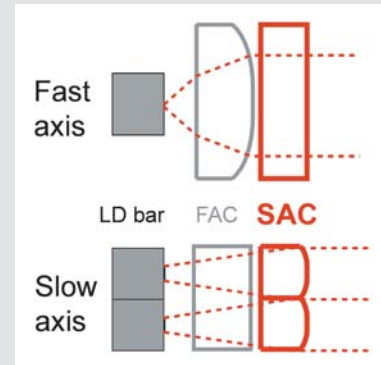
- Compensation of beam astigmatism
- High power resistant Fused Silica material
- High surface quality and very low surface roughness minimize loss
- Compatible with typical high power diode laser bars
- Compatible with fast axis collimators
- Stackable

Applications

- Fiber coupled laser diode bars
- Diode sources for solid state laser end pumping
- Diode laser direct material processing systems
- Medical direct diode lasers
- Other high power diode lasers



Array of cylindrical microlenses for collimating the «slow axis» of laser beams from high power diode bars. The optimal solution for high brightness diode laser sources.



SAC 500 Specifications

SAC type	SAC 500/1.5/x	
Array pitch (emitter spacing)	500 µm	Other pitches available upon request
Number of lenses per array	21 x 1	
Lens arrays substrate size	12.0 ± 0.05 mm x 1.5 ± 0.05 mm x 0.6 ± 0.05 mm (length x width x thickness)	
Lens surface profile	Cylindrical	
Effective focal length	1.8 mm (SAC 500/1.5/1.8) 2.0 mm (SAC 500/1.5/2.0) 2.2 mm (SAC 500/1.1/2.2)	Tolerances: < ± 0.45 % within array < ± 5 % array to array Other total length available upon request
Material	Fused Silica (Schott Lithosil [®] Q1)	
AR coating	Double sided, for λ = 770 – 1080 nm	R < 0.5 % per surface
Surface roughness	Ra < 2 nm	



Headquarters:

Leister Process Technologies
Axetris Microsystems Division
Riedstrasse
CH-6060 Sarnen/Switzerland
phone: +41 41 662 74 74
fax: +41 41 662 20 61
axetris@leister.com
www.axetris.com

USA:

Leister Technologies, LLC
1253 Hamilton Parkway
Itasca, IL 60143/USA
phone: (630) 760 1000
fax: (630) 760 1001
sales@leisterusa.com
www.leisterusa.com
Axetris Exclusive Distributor